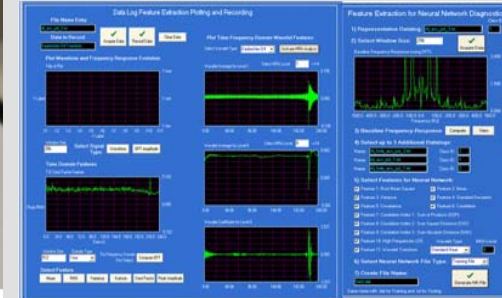
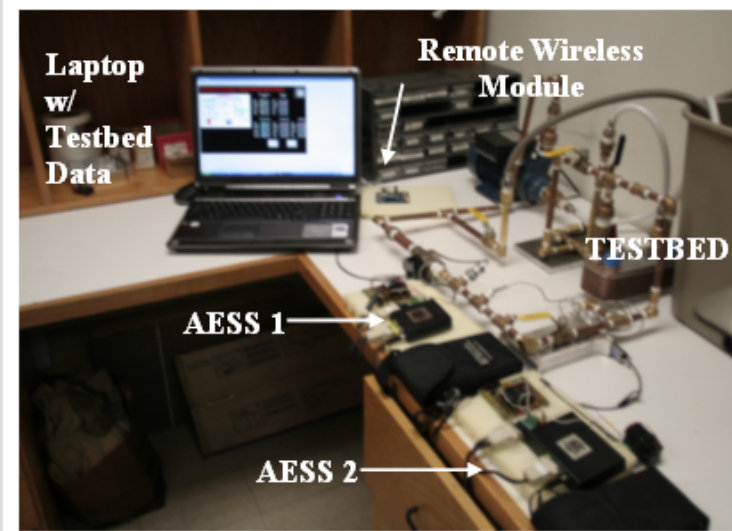


**Health
Monitoring -
Product
Line-Card**

© 2011 American GNC Corporation. All Rights Reserved



AMERICAN GNC CORPORATION
888 EASY STREET
SIMI VALLEY, CA 93065
PHONE: 1-866-856-8686
FAX: (805) 582-0098
Email:
marketing@americangnc.com
Website:
www.americangnc.com

Ultra Low Power Sensors

Name	Part Number	Transducer Type	Zigbee	RS-232	Sensor Suite Customization	1451 TEDS	RAM & Flash ^{#Note 1}	Others
CRE-SSN	CRE-SSN	--		✓	✓		8k & 116 (base system)	8 ADC channels, data acquisition system, additional IrDA& SPI ports, and GUI
CRE-SSN wireless	CRE-SSN-W	--	✓	✓	✓		8k & 116 (base system)	8 ADC channels, wireless data acquisition system , and GUI
CRE-SSN _F	CRE-SSN-F	Hall Effect		✓	✓	✓	8k & 116 (base system)	
CRE-SSN _F wireless	CRE-SSN-W-F	Hall Effect	✓	✓	✓	✓	8k & 116 (base system)	
CRE-SSN _{TRTD1}	CRE-SSN-T001	RTD		✓	✓	✓	8k & 116 (base system)	
CRE-SSN _{TRTD1} Wireless	CRE-SSN-W-T001	RTD	✓	✓	✓	✓	8k & 116 (base system)	
CRE-SSN _{P-1}	CRE-SSN-P00	silicon piezoresistive strain gages fused with high temperature glass		✓	✓	✓	8k & 116 (base system)	
CRE-SSN _{P-1} Wireless	CRE-SSN-W-P00	silicon piezoresistive strain gages fused with high temperature glass	✓	✓	✓	✓	8k & 116 (base system)	

Health Monitoring Software & Systems								
Name	Part Number	Number of Sensors	Ruggedized Mobile Computer	Dongle	1 sit	1- 10 sits	10 and more	Others
coremicro® Real-Time Structure Health Monitoring and Vibration Analysis Kernel (RTSHM-kernel)								
	RTSHM-V001-2	2 (PZT sensor)		option	option	option	option	Customizable PZT sensor
coremicro® Real-Time Structure Health Monitoring and Vibration Analysis Kernel (RTSHM-kernel)								
	RTSHM-V001-10	10 (PZT sensor)		option	option	option	option	Customizable PZT sensor
coremicro® Real-Time Structure Health Monitoring and Vibration Analysis Kernel (RTSHM-kernel)								
	RTSHM-V001-RMC-10	5 (PZT sensor)		option	option	option	option	Customizable PZT sensor
Optimized Neuro Genetic Fast Estimator (ONGFE)								
	ONGFE-API-V00	--		option	option	option	option	
coremicro® Smart Wireless Network for Failure Detection and Identification (CSWN-FDI)								
	CSWN-FDI-HM	2 (CRE-SSN ^{Note 2})	✓	option	option	option	option	ONGFE, 2 CRE-SSN (from list of baseline sensor product), IEEE 1451 TEDS, included free maintenance (fee) for 1 year, and Ruggedized Computer.
coremicro® Smart Wireless Network for Structural Failure Detection and Identification (CSWN-SFDI)								
	CSWN-FDI-SHM	2 (PZT sensor)	✓	option	option	option	option	ONGFE, RTSHM, 2 Sensor (from list of baseline sensor product), IEEE 1451 TEDS, included free maintenance (fee) for 1 year, and Ruggedized Computer.
Services								
Model	Custom Design				Maintenance (1 year fee)			
coremicro® Real-Time Structure Health Monitoring and Vibration Analysis Kernel (RTSHM-kernel)								
	✓				✓			
Optimized Neuro Genetic Fast Estimator (ONGFE)								
	✓				✓			
coremicro® Smart Wireless Network for Failure Detection and Identification (CSWN-FDI)								
	✓				✓			
coremicro® Smart Wireless Network for Structural Failure Detection and Identification (CSWN-SFDI)								
	✓				✓			

AMERICAN GNC CORPORATION
888 EASY STREET
SIMI VALLEY, CA 93065
PHONE: 1-866-856-8686
FAX: (805) 582-0098
Email: marketing@americangnc.com
Website: www.americangnc.com